

Intermittent tramadol vs tramadol administration via patient-controlled pump after lumbar discectomy: a randomized controlled trial

Kurtović, Biljana; Rotim, Krešimir; Sajko, Tomislav; Rotim, Cecilija; Friganović, Adriano; Milošević, Milan

Source / Izvornik: **Croatian Medical Journal, 2022, 63, 110 - 116**

Journal article, Published version

Rad u časopisu, Objavljena verzija rada (izdavačev PDF)

<https://doi.org/10.3325/cmj.2022.63.110>

Permanent link / Trajna poveznica: <https://um.nsk.hr/um:nbn:hr:220:548338>

Rights / Prava: [Attribution-NonCommercial-NoDerivatives 4.0 International/Imenovanje-Nekomercijalno-Bez prerada 4.0 međunarodna](#)

Download date / Datum preuzimanja: **2025-01-22**



Repository / Repozitorij:

[Repository of the Sestre milosrdnice University Hospital Center - KBCSM Repository](#)

Intermittent tramadol vs tramadol administration via patient-controlled pump after lumbar discectomy: a randomized controlled trial

Biljana Kurtović¹, Krešimir Rotim^{1,2}, Tomislav Sajko^{1,2}, Cecilija Rotim^{1,3}, Adriano Friganović^{1,4}, Milan Milošević⁵

¹University of Applied Health Sciences, Zagreb, Croatia

²Department of Neurosurgery, Sestre Milosrdnice University Hospital Center, Zagreb, Croatia

³Rotim Polyclinic, Zagreb, Croatia

⁴Department of Anesthesiology and Intensive Medicine, University Hospital Center Zagreb, Zagreb, Croatia

⁵Department of Environmental Health, Occupational and Sports Medicine, Andrija Stampar School of Public Health, University of Zagreb School of Medicine, Zagreb, Croatia

Aim To compare the effect of intermittent tramadol dosing vs tramadol administration via patient-controlled pump on pain after lumbar discectomy.

Methods This randomized prospective study enrolled 100 patients who underwent elective LIV-LV lumbar discectomy in the neurosurgery department at Sestre Milosrdnice University Hospital Center from May 2016 to July 2017. Patients were randomized to receive either tramadol (600 mg daily) via a patient-controlled analgesia (PCA) pump or intermittently. Pain was evaluated by the Croatian version of Short-Form McGill Pain Questionnaire.

Results Forty percent of patients were women. The median (interquartile range) age of the patients was 51 (40-61) years. The groups did not differ in pain at 7 PM on the day of discectomy. However, in the morning and evening on the first postoperative day and in the morning and evening of the second postoperative day, the PCA group had significantly lower pain ($P=0.023$, $P<0.001$, $P<0.001$, $P=0.026$, respectively).

Conclusion This is the first study that used the Short Form McGill Pain Questionnaire to compare the effect of tramadol administration via PCA pump and intermittent administration on pain after LIV-LV discectomy in a neurosurgery department. Tramadol showed a good analgesic efficacy in lumbar spine surgery; tramadol via PCA controlled pain more effectively than intermittently administered tramadol.

Australian New Zealand Clinical Trials Registry: ANZCTR12618001893291.

Received: December 28, 2020

Accepted: February 9, 2022

Correspondence to:

Biljana Kurtović
University of Applied Health Sciences
Mlinarska 38
10000 Zagreb, Croatia
biljana.kurtovic@zvu.hr

Lower back pain due to lumbar disc herniation is a common complaint. In more than two-thirds of patients, non-medical pain relief methods did not decrease pain or even increased it (1). Lumbar discectomy is one of the most common spinal surgical procedures (2-4). The treatment of pain after lumbar discectomy includes specific analgesia administered according to pain intensity and balanced use of medications. Therefore, a successful treatment requires an understanding of neuroanatomy and of the complex pathological and physiological pain mechanisms.

Adequate pain management in the postoperative period demands an interdisciplinary approach and is associated with better functional outcomes, early patient mobilization, early hospital discharge, and preventing chronic pain occurrence (5,6). Unimodal analgesia implies administering one analgesic from a specific group (nonsteroidal anti-inflammatory drugs, opioids, non-opioids), requiring relatively high doses of analgesics to achieve a better pain relief.

Tramadol is an antinociceptive drug with low affinity for opioid receptors that achieves analgesia by combining indirect postsynaptic activation of two adrenergic receptors and opioid activity. It is administered at doses of up to 600 mg daily (7-13). Tramadol shows good analgesic efficacy and potency, comparable to codeine and morphine (14,15). It is associated with a lower risk of sedation and opioid addiction due to its low potency and weak affinity for μ receptors and blocking of repeated noradrenalin storage (16,17). A meta-analysis of 18 placebo-controlled studies confirmed the safety and efficacy of tramadol in treating moderate to severe postoperative pain, depending on the dose (18). However, some authors suggest that the relative "safety" of tramadol or opioids in general cannot be determined (19). Postoperative pain can be differently affected by different methods of unimodal analgesic administration. In some studies, patient-controlled analgesia (PCA), compared with conventional opioid analgesia, resulted in better pain control and increased patient satisfaction in postoperative pain management (20,21). While some studies indicated equal efficacy of intermittent and PCA administration in pain assessment (22,23), others showed PCA superiority (24). Unimodal administration of tramadol by two different methods has not been investigated in postoperative pain management after lumbar discectomy. The aim of this study was to investigate intermittent tramadol dosing vs tramadol administration via patient-controlled pump after lumbar discectomy.

PATIENTS AND METHODS

Design

In this prospective randomized study, 150 neurosurgical patients who underwent elective lumbar discectomy in the neurosurgery department of Sestre Milosrdnice University Hospital Center between May 2016 and July 2017 were considered eligible. The inclusion criteria were age older than 18; the first elective neurosurgical procedure on spine level LIV-LV; no analgesic allergies; no malignant or liver diseases; the mental capacity to give informed consent; the ability to use a PCA pump; and receiving tramadol as a postoperative pain relief. Thirty-seven patients were excluded as they did not meet the inclusion criteria. Overall, 113 patients were randomized to receive a 600 mg intravenous absolute dose of tramadol either applied by PCA pump or by intermittent IV administration. Randomization was performed by MedCalc for Windows, version 15.1 (www.medcalc.be). Since the trial investigators had no way of knowing which participant would go into which group, they could not influence the randomization. Group assignments were sealed within numbered envelopes given to nurses who administered the analgesia. Thirteen patients were excluded due to repetitive side effects after administering metoclopramide (3×10 mg/24 hours intravenously) and/or thiethylperazine (2×6.5 mg/24 hours intravenously) therapy for nausea and vomiting. We did not collect the data on the number of excluded patients per group. Recruitment was continued until a target of 100 participants was reached (50 in each group) (Figure 1). Tramadol analgesia was prescribed by the attending physician and administered by nurses who were educated on the implementation of the study and methods of analgesia, with special reference to PCA application, before the start of the study. Pain was assessed with the Short-Form McGill Pain Questionnaire (SF-MPQ). This study is a part of a 200-patient study registered on Australian New Zealand Clinical Trials Registry (ANZCTR12618001893291). Tramadol 600 mg daily was administered postoperatively, either intermittently or via a PCA pump. Both groups used the same amount of tramadol, 600 mg/24 hours (Table 1). During lumbar discectomy, patients received general anesthesia with propofol (1.5-2.5 mg/kg), sufentanil (0.3 μ g/kg), a vecuronium bolus dose (0.1 mg/kg), and sevoflurane 50%/50% O₂.

The sample size was calculated assuming an estimated postoperative difference of at least 40% more patients who do not feel pain at the end of the study in the PCA group compared with the INTER group. For the Fish-

er exact test with 95% of power, an alpha significance of 5%, and an equal number of patients in each group, the study required at least 41 patients per group.

Instrument

Pain was assessed with the Croatian version of SF-MPQ in the evening on the day of the surgery, and in the morning and evening on the first and second postoperative day. The nurses received a one-hour theoretical education on the study topic and the SF-MPQ design with each questionnaire descriptor explained. The lead researcher supervised the daily SF-MPQ use for the first month of data collection to resolve any possible difficulties.

The patients signed an informed consent form for study participation. They were explained that they could withdraw their informed consent at any time during the study with no effects on their hospital treatment. The study was approved by the Ethics Committee of Sestre Milosrdnice University Hospital Center (EP-4433/15-9).

Statistical analysis

Quantitative data are presented as arithmetic means, standard deviations, and 95% confidence intervals (CI). The Fisher-Freeman-Halton exact test was used for the anal-

ysis of differences in categorical variables between the groups. Cronbach α internal consistency coefficient was higher than 0.87, indicating appropriate scale structure of the questionnaire. The test groups scores are presented as scores on each answer ranging from "I don't feel pain" to "I feel intolerable pain" (Table 2) and as a composite score (the sum of all 15 questions about the type of pain, Table 3). The composite score was obtained by adding up the results of all 15 items graded on a scale from 0=I do not feel pain to 3=I feel strong pain. The maximum score was 45, indicating the strongest level of experienced pain, while the minimum score was 0, indicating no pain. *p* values lower than 0.05 were considered significant. The analysis

TABLE 1. The characteristics of tramadol administration via patient-controlled analgesia (PCA) pump

| Characteristic | |
|------------------|-------------|
| Drug dose per mL | 12 mg/mL |
| Dilution volume | 50 mL |
| Dose unit | mg/h |
| Soft limit | 600 mg/24 h |
| Device type | Perfusor |
| Dose period | 24 h |
| Set dose limits | 600 mg |
| Bolus amount | 20 mg |
| Lock time | 120 minutes |
| Initial bolus | 20 mg |
| Basal flow | 1.38 mL/h |

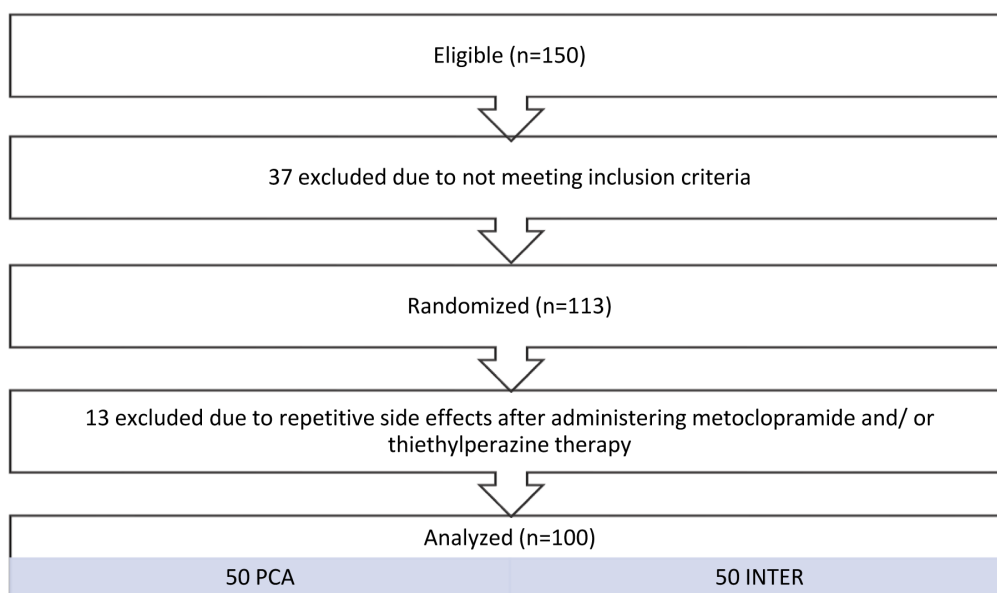


FIGURE 1. Patient recruitment flowchart.

was performed with StatsDirect software, version 3.0.187. (StatsDirect Ltd, Wirral, UK).

RESULTS

The INTER and PCA group consisted of 50 participants each. The average hospital stay for each group was three days. In the PCA group, tramadol was administered as shown in Table 1. Intermittent tramadol was administered every six hours per day as 150 mg dose.

Of the 100 patients 40% were women. Median (interquartile range) age was 51 (40-61) years. The groups did not differ in demographic characteristics. The INTER group

was significantly more physically active preoperatively ($P=0.001$) (Table 4).

At the first postoperative measurement, uncomfortable pain was felt by 28% of patients from the INTER group and by 42% of patients from the PCA group. At the second measurement, uncomfortable pain was reported by 30% and 16% patients, respectively; at the third measurement by 36% and 8%, respectively; at the fourth measurement by 28% and 0% respectively; and at the fifth measurement by 15.2% and 0% patients, respectively (Table 2). The PCA group had significantly lower pain at the second, third, fourth, and fifth measurement than the INTER group (Table 2).

TABLE 2. Short-Form McGill Pain Questionnaire (SF-MPQ) results in groups receiving intermittent tramadol (INTER) and tramadol via patient-controlled analgesia (PCA) pump

| SF-MPQ | | Group | | | | Fisher-Freeman-Halton exact test (P values) |
|--------------------------------------|---------------------------|-------|------|-----|----|--|
| | | INTER | | PCA | | |
| | | No. | % | No. | % | |
| preoperatively | I don't feel pain | 2 | 4 | 1 | 2 | 0.318 |
| | I feel weak pain | 5 | 10 | 2 | 4 | |
| | I feel uncomfortable pain | 13 | 26 | 18 | 36 | |
| | I feel disturbing pain | 19 | 38 | 21 | 42 | |
| | I feel intolerable pain | 11 | 22 | 8 | 16 | |
| 7 PM on the day of lumbar discectomy | I don't feel pain | 10 | 20 | 5 | 10 | 0.161 |
| | I feel weak pain | 18 | 36 | 15 | 30 | |
| | I feel uncomfortable pain | 14 | 28 | 21 | 42 | |
| | I feel disturbing pain | 8 | 16 | 8 | 16 | |
| | I feel intolerable pain | 0 | 0 | 1 | 2 | |
| 7 AM on the first postoperative day | I don't feel pain | 8 | 16 | 16 | 32 | 0.023 |
| | I feel weak pain | 23 | 46 | 26 | 52 | |
| | I feel uncomfortable pain | 15 | 30 | 8 | 16 | |
| | I feel disturbing pain | 4 | 8 | 0 | 0 | |
| | I feel intolerable pain | 0 | 0 | 0 | 0 | |
| 7 PM on the first postoperative day | I don't feel pain | 8 | 16 | 21 | 42 | <0.001 |
| | I feel weak pain | 22 | 44 | 25 | 50 | |
| | I feel uncomfortable pain | 18 | 36 | 4 | 8 | |
| | I feel disturbing pain | 2 | 4 | 0 | 0 | |
| | I feel intolerable pain | 0 | 0 | 0 | 0 | |
| 7 AM on the second postoperative day | I don't feel pain | 9 | 18 | 33 | 66 | <0.001 |
| | I feel weak pain | 25 | 50 | 17 | 34 | |
| | I feel uncomfortable pain | 14 | 28 | 0 | 0 | |
| | I feel disturbing pain | 2 | 4 | 0 | 0 | |
| | I feel intolerable pain | 0 | 0 | 0 | 0 | |
| 7 PM on the second postoperative day | I don't feel pain | 5 | 10.9 | 36 | 72 | 0.026 |
| | I feel weak pain | 34 | 73.9 | 13 | 26 | |
| | I feel uncomfortable pain | 7 | 15.2 | 0 | 0 | |
| | I feel disturbing pain | 0 | 0 | 1 | 2 | |
| | I feel intolerable pain | 0 | 0 | 0 | 0 | |

TABLE 3. The Short-Form McGill Pain Questionnaire (SF-MPQ) composite score in groups receiving intermittent tramadol (INTER) and tramadol via patient-controlled analgesia (PCA) pump (N=50 in each group)

| SF-MPQ | | Arithmetic mean | Standard deviation | Standard error | 95% confidence interval | | | |
|--|-------|-----------------|--------------------|----------------|-------------------------|-------|-----|-----|
| | | | | | lower | upper | Min | Max |
| preoperatively | INTER | 20.34 | 8.847 | 1.251 | 17.83 | 22.85 | 0 | 41 |
| | PCA | 18.52 | 9.283 | 1.313 | 15.88 | 21.16 | 0 | 38 |
| 7 PM on the day of the lumbar discectomy | INTER | 9.28 | 6.459 | 0.913 | 7.44 | 11.12 | 1 | 38 |
| | PCA | 10.42 | 8.645 | 1.223 | 7.96 | 12.88 | 0 | 36 |
| 7 AM on the first postoperative day | INTER | 7.10 | 6.058 | 0.857 | 5.38 | 8.82 | 1 | 32 |
| | PCA | 5.28 | 5.410 | 0.765 | 3.74 | 6.82 | 0 | 23 |
| 7 PM on the first postoperative day | INTER | 6.10 | 4.941 | 0.699 | 4.70 | 7.50 | 0 | 23 |
| | PCA | 3.22 | 4.752 | 0.672 | 1.87 | 4.57 | 0 | 23 |
| 7 AM on the second postoperative day | INTER | 5.02 | 4.162 | 0.589 | 3.84 | 6.20 | 0 | 18 |
| | PCA | 1.28 | 2.879 | 0.407 | 0.46 | 2.10 | 0 | 12 |
| 7 PM on the second postoperative day | INTER | 4.04 | 3.849 | 0.544 | 2.95 | 5.13 | 0 | 17 |
| | PCA | 0.76 | 2.066 | 0.292 | 0.17 | 1.35 | 0 | 12 |

TABLE 4. Socio-demographic characteristics of groups receiving intermittent tramadol (INTER) and tramadol via patient-controlled analgesia (PCA) pump

| | | INTER | | PCA | |
|--------------------|-------------------|-------|----|-----|----|
| | | No. | % | No. | % |
| Age groups (years) | ≤35 | 5 | 10 | 4 | 8 |
| | 35-45 | 11 | 22 | 13 | 26 |
| | 45-55 | 14 | 28 | 10 | 20 |
| | 55-65 | 13 | 26 | 14 | 28 |
| | >65 | 7 | 14 | 9 | 18 |
| Sex | male | 30 | 60 | 30 | 60 |
| | female | 20 | 40 | 20 | 40 |
| Occupation | unemployed | 18 | 36 | 8 | 16 |
| | moderate work | 18 | 36 | 30 | 60 |
| | exhausting work | 14 | 28 | 12 | 24 |
| Education | primary school | 9 | 18 | 2 | 4 |
| | secondary school | 32 | 64 | 28 | 56 |
| | community college | 4 | 8 | 10 | 20 |
| | university | 5 | 10 | 10 | 20 |
| Physically active | no | 1 | 2 | 18 | 36 |
| | yes | 49 | 98 | 32 | 64 |
| Smoking | no | 29 | 58 | 34 | 68 |
| | yes | 21 | 42 | 16 | 32 |

DISCUSSION

In our study, on the day of the surgery, 28% of the INTER group and 42% of the PCA group felt uncomfortable pain. After the second postoperative measurement, the PCA group reported significantly lower pain values. Hadi et al (25) showed that tramadol delivered by patient-controlled pump was as efficient as morphine administered by patient-controlled pump.

In our study, at the first postoperative measurement intermittently administered tramadol showed a superior analgesic efficacy compared with tramadol administered by a patient-controlled pump. However, at later measurements PCA group experienced better analgesic effect. This finding can be explained by the fact that a constant concentration of tramadol in plasma was achieved and the analgesic effect was maintained. The usual intermittent starting dose of tramadol is 100 mg twice a day, which, if the pain intensity does not decrease, has to be increased to 150/200 mg twice a day to a total maximum daily dose of 400 mg, and sometimes up to 600 mg. If administered intramuscularly or intravenously, the recommended dose is 50-100 mg, 4-6 times a day (13). In this study, the maximum dose of 600 mg/24 hours of tramadol was used. The safety and efficacy of dose-dependent tramadol in the treatment of moderate to severe postoperative pain were confirmed in a meta-analysis of 3453 patients in 18 placebo-controlled studies (18).

This study is limited by a lack of data collection on side effects of tramadol administration. Furthermore, we did not collect the data on the number of patients per group who were excluded due to repetitive side effects after administering metoclopramide and/or thiethylperazine therapy. We observed no erroneous use of PCA by the patients or any complications associated with PCA use.

This is the first study that uses the SF-MPQ to compare the effects of tramadol administration via PCA and intermittent tramadol administration on pain after LIV-LV discectomy in a neurosurgery department. Tramadol showed a good analgesic efficacy in lumbar spine surgery; PCA tra-

modol more effectively controlled pain than intermittent tramadol administration.

Funding None.

Ethical approval given by the Ethics Committee of Sestre Milosrdnice University Hospital Center (EP-4433/15-9).

Declaration of authorship all authors conceived and designed the study; acquired the data; analyzed and interpreted the data; drafted the manuscript; critically revised the manuscript for important intellectual content; gave approval of the version to be submitted; and agree to be accountable for all aspects of the work.

Competing interests All authors have completed the Unified Competing Interest form at www.icmje.org/coi_disclosure.pdf (available on request from the corresponding author) and declare: no support from any organization for the submitted work; no financial relationships with any organizations that might have an interest in the submitted work in the previous three years; and no other relationships or activities that could appear to have influenced the submitted work.

References

- Cilingir D, Hintistan S, Yigitbas C, Nural N. Nonmedical methods to relieve low back pain caused by lumbar disc herniation: a descriptive study in northeastern Turkey. *Pain Manag Nurs*. 2014;15:449-57. [Medline:24882024](#) [doi:10.1016/j.pmn.2012.03.003](#)
- Kosztowski T, Gokaslan ZL. Determining the extent of lumbar discectomy in patients with herniated lumbar discs. *Insights Neurosurg*. 2016;1:1-3. [doi:10.21767/2471-9633.10002](#)
- Mysliwiec LW, Cholewicki J, Winkelpleck MD, Eis GP. MSU Classification for herniated lumbar discs on MRI: toward developing objective criteria for surgical selection. *Eur Spine J*. 2010;19:1087-93. [Medline:20084410](#) [doi:10.1007/s00586-009-1274-4](#)
- Wilson CA, Roffey DM, Chow D, Alkherayf F, Wai EK. A systematic review of preoperative predictors for postoperative clinical outcomes following lumbar discectomy. *Spine J*. 2016;16:1413-22. [Medline:27497886](#) [doi:10.1016/j.spinee.2016.08.003](#)
- Bajwa SJ, Haldar R. Pain management following spinal surgeries: an appraisal of the available options. *J Craniovertebr Junction Spine*. 2015;6:105. [Medline:26288544](#) [doi:10.4103/0974-8237.161589](#)
- Miller ET, Abu-Alhaja DM. Importance of interdisciplinary pain management. *Pain Manag Nurs*. 2019;20:91-2. [Medline:31036326](#) [doi:10.1016/j.pmn.2019.02.001](#)
- Raffa RB, Friderichs E, Reimann W, Shank RP, Codd EE, Vaught JL. Opioid and nonopioid components independently contribute to the mechanism of action of tramadol, an 'atypical' opioid analgesic. *J Pharmacol Exp Ther*. 1992;260:275-85. [Medline:1309873](#)
- Berrocso E, Rojas-Corralles MO, Mico JA. Differential role of 5-HT1A and 5-HT1B receptors on the antinociceptive and antidepressant effect of tramadol in mice. *Psychopharmacology (Berl)*. 2006;188:111-8. [Medline:16832657](#) [doi:10.1007/s00213-006-0464-6](#)
- Ide S, Minami M, Ishihara K, Uhl GR, Sora I, Ikeda K. Mu opioid receptor-dependent and independent components in effects of tramadol. *Neuropharmacology*. 2006;51:651-8. [Medline:16793069](#) [doi:10.1016/j.neuropharm.2006.05.008](#)
- Oliva P, Aurilio C, Massimo F, Grella A, Maione S, Grella E. The antinociceptive effect of tramadol in the formalin test is mediated by the serotonergic component. *Eur J Clin Pharmacol*. 2002;445:179-85. [Medline:12079682](#) [doi:10.1016/S0014-2999\(02\)01647-3](#)
- Raffa RB. Basic pharmacology relevant to drug abuse assessment: tramadol as an example. *J Clin Pharm Ther*. 2008;33:101-8. [Medline:18315774](#) [doi:10.1111/j.1365-2710.2008.00897.x](#)
- McCarberg B. Tramadol extended-release in the management of chronic pain. *Ther Clin Risk Manag*. 2007;3:401-10. [Medline:18488071](#)
- Jukić M, Majerić Kogler V, Fingler M. Bol - uzroci i liječenje [In Croatian]. Zagreb: Medicinska naklada; 2011.
- Grond S, Meuser T, Zech D, Hennig U, Lehmann KA. Analgesic efficacy and safety of tramadol enantiomers in comparison with the racemate: a randomised, double-blind study with gynaecological patients using intravenous patient-controlled analgesia. *Pain*. 1995;62:313-20. [Medline:8657431](#) [doi:10.1016/0304-3959\(94\)00274-I](#)
- Wiebalck A, Tryba M, Hoell T, Strumpf M, Kulka P, Zenz M. Efficacy and safety of tramadol and morphine in patients with extremely severe postoperative pain. *Acute Pain*. 2000;3:22-8.
- Keskinbora K, Aydinli I. Atipik opioid analjezik. *Tramadol. Agri*. 2006;18:5-19. [Medline:16783663](#)
- Stern M, Sperber K, Pappagallo M. Tramadol. In: Wallace MS, Staats PS, (Eds.) *Pain medicine and management: just the facts*. 1st ed. New York: McGraw-Hill; 2005.
- Moore RA, McQuay HJ. Single-patient data meta-analysis of 3453 postoperative patients: oral tramadol versus placebo, codeine and combination analgesics. *Pain*. 1997;69:287-94. [Medline:9085303](#) [doi:10.1016/S0304-3959\(96\)03291-5](#)
- Murphy JD, Yan D, Hanna MN, et al. Comparison of the postoperative analgesic efficacy of intravenous patient-controlled analgesia with tramadol to intravenous patient-controlled analgesia with opioids. *J Opioid Manag*. 2010;6:141-7. [Medline:20481179](#) [doi:10.5055/jom.2010.0014](#)
- Liu SS, Wu CL. The effect of analgesic technique on postoperative patient-reported outcomes including analgesia: a systematic review. *Anesth Analg*. 2007;105:789-808. [Medline:17717242](#) [doi:10.1213/01.ane.0000278089.16848.1e](#)
- Wu CL, Raja SN. Treatment of acute postoperative pain. *Lancet*. 2011;377:2215-25. [Medline:21704871](#) [doi:10.1016/S0140-6736\(11\)60245-6](#)
- Tabingan J, Dipasupil C, Durante V. A comparison of patient-controlled analgesia (PCA) with nurse-administered analgesia (NAA) in post-operative pain control among open heart surgery patients at the Philippine Heart Center. *Phil Heart Center J*. 2014;18:75-9.
- Demirel I, Ozer AB, Atilgan R, et al. Comparison of patient-

- controlled analgesia versus continuous infusion of tramadol in post-caesarean section pain management. *J Obstet Gynaecol Res.* 2014;40:392-8. [Medline:24147822](#) [doi:10.1111/jog.12205](#)
- 24 Na HS, An SB, Park HP, Lim YJ, Hwang JW, Jeon JT, et al. Intravenous patient-controlled analgesia to manage the postoperative pain in patients undergoing craniotomy. *Korean J Anesthesiol.* 2011;60:30-5. [Medline:21359078](#) [doi:10.4097/kjae.2011.60.1.30](#)
- 25 Hadi MA, Kamaruljan HS, Saedah A, Abdullah NM. A comparative study of intravenous patient-controlled analgesia morphine and tramadol in patients undergoing major operation. *Med J Malaysia.* 2006;61:570-6. [Medline:17623958](#)